

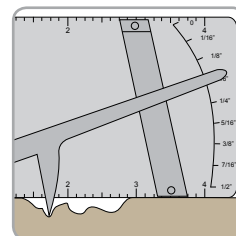
## Elcometer 119 Pit Gauge

The Elcometer 119 Pipe Pit Gauge is a pocket size gauge designed to identify the condition of a pipe.

The gauge is placed horizontally on the surface of the pipe and the stylus is positioned into the base of the corrosion pit.

The gauge shows the pit depth compared to the nominal pipe wall thickness.

Imperial units only.



### Technical Specification

| Part Number      | Description                        |
|------------------|------------------------------------|
| <b>E119-----</b> | Elcometer 119 Pipe Pit Gauge       |
| Range            | 0 - 500mils (0 - 0.5")             |
| Graduation       | 10mils and 1/16"                   |
| Dimensions       | 68 x 133 x 4mm (21 x 5.25 x 0.18") |
| Weight           | 227g (8oz)                         |